

Laying a Strong Foundation in Zhenghua Primary School



Resilience, Innovation, Integrity, Care, Collaboration and Excellence

School Hours (Primary One)

- **Week 1**

Monday to Friday (5/1 to 9/1) : 7.30 am – 11.30 am

- **Week 2 onwards (12/1 onwards)**

Monday to Thursday: 7.30 am – 1.20*pm

Friday: 7.30 am – 1 pm

Be seated in class by 7.25 am

Snack Time: 11.30 am



Dismissal

- All students will be accompanied by their class teacher to Gate 2, Gate 3 or the School Lobby (for those taking the School Bus).
- Please wait for your child at the designated gate and be on time, to reduce your child's anxiety.
- Please do not change the pickup point without informing your child's Form Teachers or SCC/Raffles personnel.
- Do inform them **early** to give buffer time to prepare for the new dismissal arrangement.



Name Tag/ Lanyard

- Please get your child to wear the name tag with the dismissal information so that the teacher knows which gate to send your child to for dismissal.



Zhenghua Primary School

Name: _____

Class : 1CE

Dismissal (please tick)

- ☐ Gate 2: Side Gate beside Blk 401 ☐ Lobby: School Bus
☐ Gate 3: Side Gate beside bus stop ☐ Red Tent: Siblings
☐ White Tent: Other Student Care Centre ☐ YMCA

Contact Information:

Parent's Contact No.: _____

Name of Student Care Centre (other than YMCA): _____

Contact No.: _____



Resilience, Innovation, Integrity, Care, Collaboration and Excellence

Dismissal

Gate 2 – Block 401

Lobby: School Bus

Gate 3 – Bus Stop



Resilience, Innovation, Integrity, Care, Collaboration and Excellence

Red Tent next to canteen: Waiting for siblings



White Tent : External Student Care Centres



Resilience, Innovation, Integrity, Care, Collaboration and Excellence

Dismissal

- If your child is attending the school-based Student Care Centre (SCC - Raffles) at our school, the SCC staff will pick them up from their classrooms to take them to their respective SCC classrooms.



Resilience, Innovation, Integrity, Care, Collaboration and Excellence

Attendance and Punctuality Matters



Resilience, Innovation, Integrity, Care, Collaboration and Excellence

Procedures for Leaving School Earlier

- For safety reasons, students who need to leave the school during curriculum time **must be picked up from our General Office by a parent, an adult family member or a caregiver.**
- The adult picking up our student will have to complete an “**Early Dismissal**” form which must be signed by one of our General Office staff and presented to the security guard before the student is allowed to leave our school with the accompanying adult.



Attendance in School is Important for learning

- Please inform the Form teachers if your child/ward is unable to attend school.
- Please **do not** take your child/ward out of school for other purposes (e.g., vacation, visiting relatives) during term time. The absence will be marked as 'Absent without Valid Reason'.



Holistic Assessment (HA)

To support the learning
and
development of the child



Resilience, Innovation, Integrity, Care, Collaboration and Excellence

Aim of Primary Education

- ❖ To lay a strong foundation
- ❖ To nurture the whole child

Values

Life skills

Social behaviour



Develop the WHOLE child

Every subject is important



Resilience, Innovation, Integrity, Care, Collaboration and Excellence

Assessment is part of learning



Assessment at Primary 1



Non-weighted

✓ **Different types of assessments**

e.g.

- **Topical Reviews**
- **Short Writing**
- **Reading**
- **Performance Tasks**

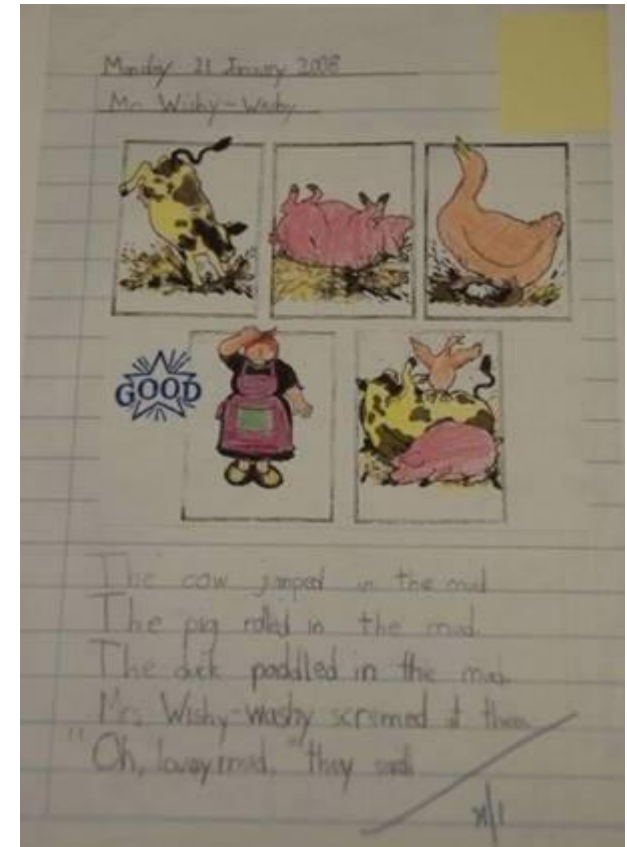
✓ **Shorter assessments**

✓ **More and richer feedback**

- ~~Mid Year Exam~~
- ~~Year End Exam~~



How will my child be assessed for Languages?



Story Writing



Resilience, Innovation, Integrity, Care, Collaboration and Excellence



Show and Tell



Reading Tasks



Simple Writing Tasks



Teachers ask questions and give feedback to improve pupils' learning



Resilience, Innovation, Integrity, Care, Collaboration and Excellence

READING ALOUD RUBRICS

Descriptors	☺	☺☺	☺☺☺	☺☺☺☺
Pronunciation	Pronunciation is unclear, with many errors	Pronunciation is somewhat unclear; with a number of noticeable errors	Generally clear pronunciation, with a number of noticeable errors	Clear and consistently good pronunciation
Fluency	Very slow and jerky reading of words, with many words skipped or unread	Slow and hesitant reading with many words skipped or unread	Reading is somewhat fluent with some words skipped or unread	Consistently fluent reading without hesitation

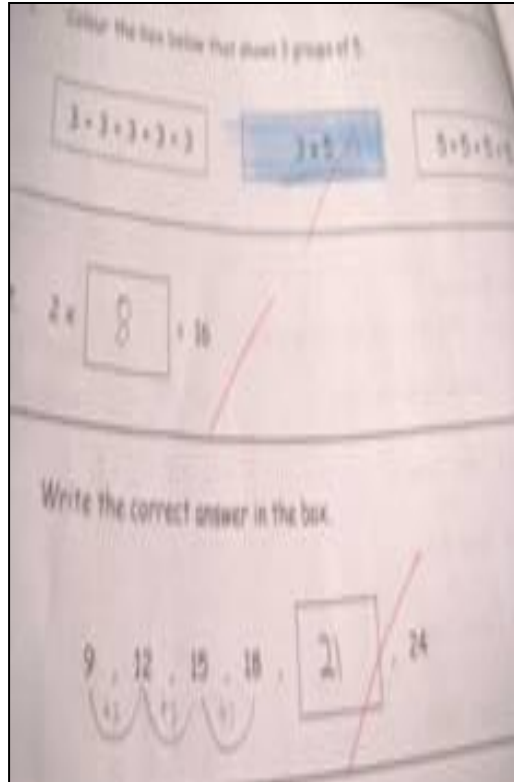


Self & Peer Assessment

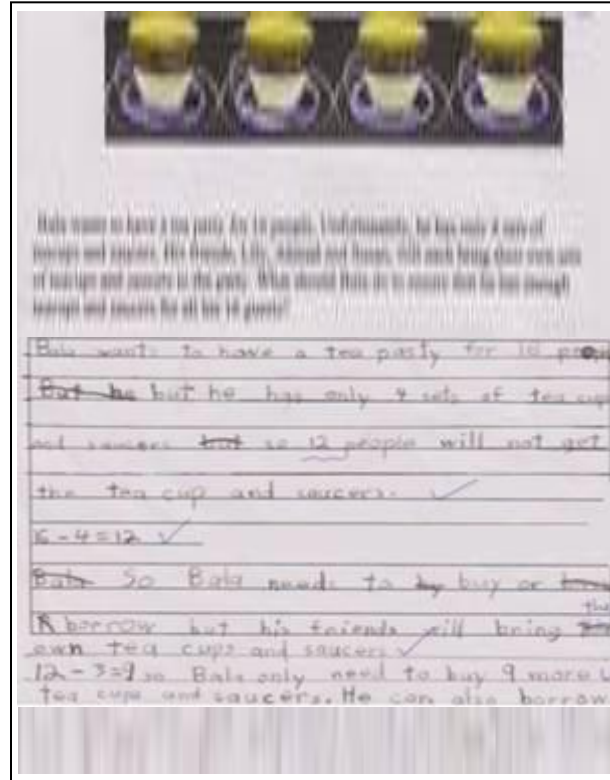
	Please tick(✓)		
	Yes	Sometimes	No
I looked at my friends while presenting.			
I spoke clearly.			
My friends could hear me.			
I spoke in complete sentences.			

	Please tick(✓)		
	Yes	Sometimes	No
My friend looked at us while presenting.			
My friend spoke clearly.			
My friend was well-prepared.			
My friend knows the topic well.			





Bite-Sized Review



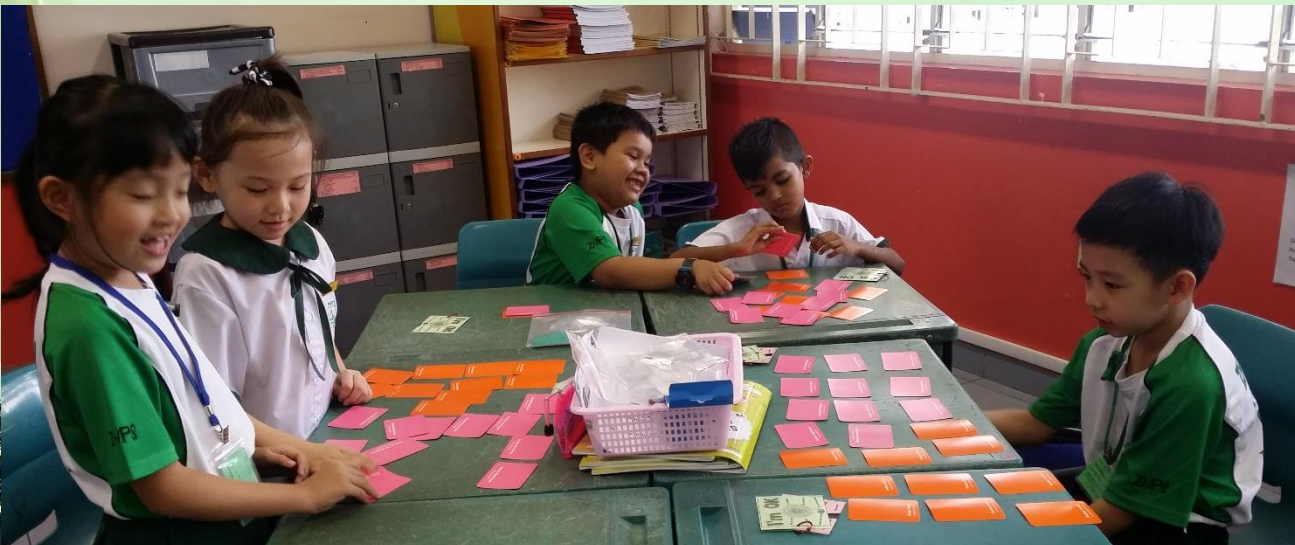
Journal Writing



Performance Tasks



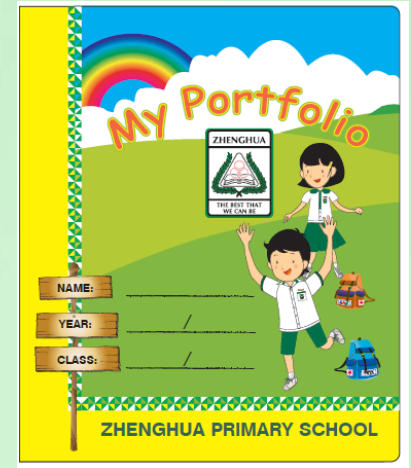
A range of appropriate assessment tasks and practices are used to assess other subjects



How will you receive feedback on your child's progress?

1) Holistic Assessment Portfolio

- Termly progress reports
- Portfolio contains samples of your child's work and performance tasks in all subjects
 - with rubrics
 - with teacher's qualitative comments



How will you receive feedback on your child's progress?

2) Mid-year and End-of-year report cards

- Qualitative descriptors (Learning Outcomes) to show your child's learning progress
- Overall qualitative comments on your child's learning



Partnership with Parents

Term 2: Parent-Child-Teacher Conference



Resilience, Innovation, Integrity, Care, Collaboration and Excellence

Additional Information

- At the end of the year, P1 students will stay with their classmates and move together to the same P2 classes.



Programme for Active Learning



PAL



Resilience, Innovation, Integrity, Care, Collaboration and Excellence

The 2 Broad Areas in PAL

1. Sports & Outdoor Education
2. Performing & Visual Arts



Resilience, Innovation, Integrity, Care, Collaboration and Excellence



Objectives of PAL

- Provide P1 and P2 students with broad exposure and experiences through fun & varied activities
- Facilitate holistic development in the 5 domains (cognitive, moral, social, aesthetics, physical)
- Provide varied avenues to develop *social emotional competencies*



Resilience, Innovation, Integrity, Care, Collaboration and Excellence

Characteristics of PAL –

- Learning in a Creative Way
- Opportunities for Children to Create



Resilience, Innovation, Integrity, Care, Collaboration and Excellence

Characteristics of PAL :

- Experiential in Nature
- Fun & Enjoyable



Resilience, Innovation, Integrity, Care, Collaboration and Excellence



Characteristics of PAL –

■ Incorporates Values Education & SEL



Resilience, Innovation, Integrity, Care, Collaboration and Excellence

PAL in ZHPS

- P1 - 3 modules
- Each module spans 7 weeks
- 2 hrs of PAL a week

P1 Module

1. Outdoor Education
2. Visual Art
3. Sports and Games

The End



Resilience, Innovation, Integrity, Care, Collaboration and Learning

