



Mrs May Wong

Principal

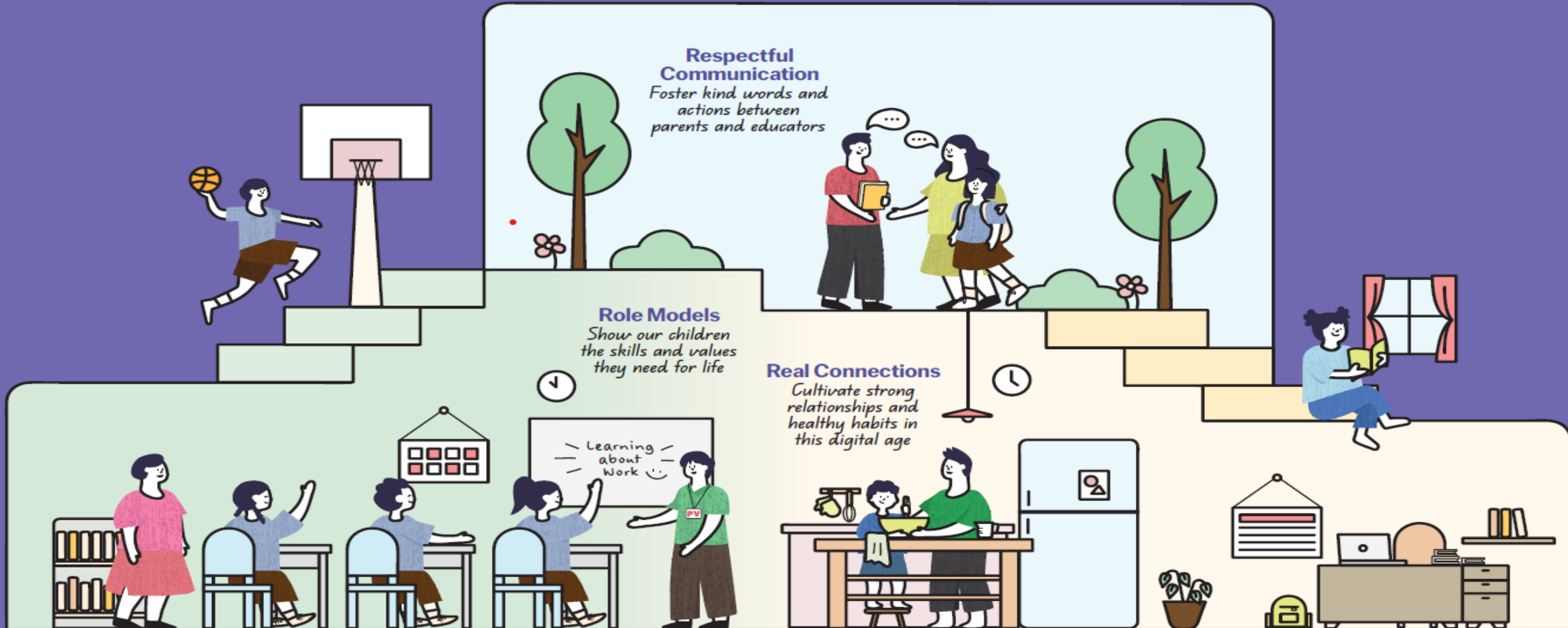
School-Home Partnership

- ❑ Research shows that children are more likely to perform better when school and families work well together.
- ❑ Students benefit in grades, test scores, attitudes toward schoolwork, behavior, homework completion, and attendance rates.
- ❑ Parent partnership in children's learning is positively related to achievement.



Guidelines for School-Home Partnership

Raising a Happy, Confident, and Kind Generation Together



Respectful Communication

Foster kind words and actions between parents and educators



- Listen to and understand each other's perspectives and concerns regarding each child.
- Communicate kindly using official channels. Teachers are not required to share their personal mobile numbers.
- Respect each other's time by communicating during working hours.

Role Models

Show our children the skills and values they need for life



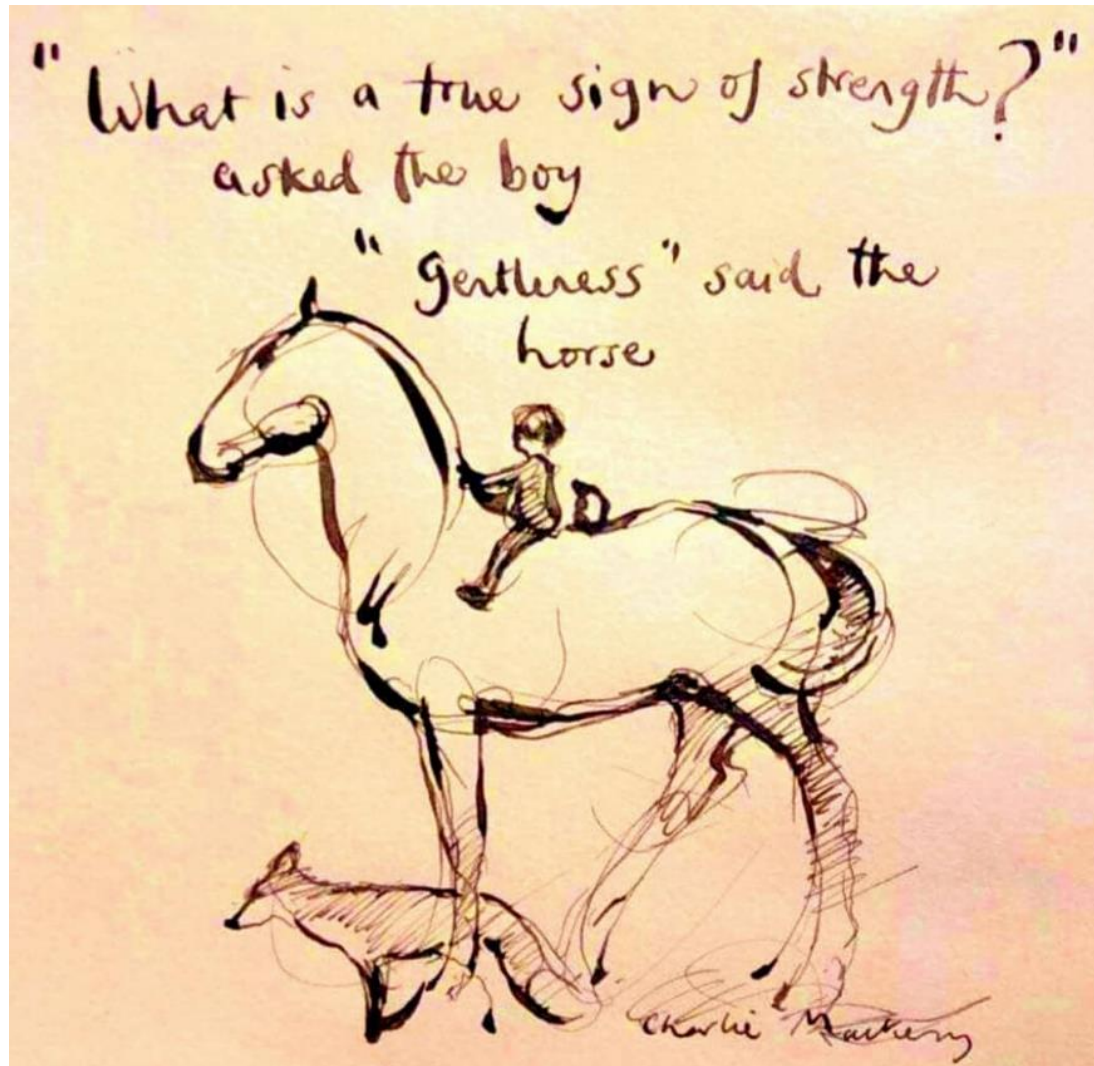
- Practise gratitude and find joy in everyday experiences with our children.
- Instil confidence by encouraging responsibility and believing in each child's abilities.
- Model good values in words and actions, at school and at home.

Real Connections

Cultivate strong relationships and healthy habits in this digital age



- Build strong bonds through shared experiences and meaningful conversations.
- Establish good habits for our children to stay confident and in control of their technology use.
- Provide a balanced mix of engaging online and offline activities, at school and at home.



*From Charlie Mackesy, the beloved author of
'The Boy, the Mole, the Fox and the Horse'*

ZHPS Approach to Discipline

- We take a **positive** and **pro-active** approach to discipline
- Discipline is an **educative** process to guide our pupils to develop self-management, responsibility and good character.
- Disciplinary measures help pupils to **learn that there are consequences** for inappropriate behaviours and actions and **take responsibility not to repeat their mistakes.**



- **Promote** a safe and supportive environment and a culture of care.
- **Prevent** challenging behaviours from occurring.



A Positive & Proactive Approach to Discipline

- **Replace** inappropriate behaviour with prosocial, appropriate ones.
- **Restore** relationships with others hurt by their actions.



- **Address** inappropriate behaviour promptly.
- **Correct** it before it affects students' development and well-being.

Every child is a different kind of flower.

All together they make this world a
beautiful garden.

