

# Student Development Team (SDT) Lower Primary

Lower Primary Year Head  
Mrs Lee Boon Kwang



Primary 2 Assistant Year Head  
Mdm Ong Yan Joo



*Resilience, Innovation, Integrity, Care, Collaboration and Excellence*

# Attendance and Punctuality Matters



*Resilience, Innovation, Integrity, Care, Collaboration and Excellence*

# Procedures for Leaving School Earlier

- For safety reasons, students who need to leave the school during curriculum time **must be picked up from our General Office by a parent, an adult family member or a caregiver.**
- The adult picking up our student will have to complete an “**Early Dismissal**” form which must be signed by one of our General Office staff and presented to the security guard before the student is allowed to leave our school with the accompanying adult.



# Attendance in School is Important for learning

- Please **do not** take your child/ward out of school for other purposes (e.g., vacation, visiting relatives) during term time. The absence will be marked as '**Absent without Valid Reason**'. Form Teachers must be informed of your child's absence.
- For all other reasons for overseas travel during term time, please email the Form Teachers the dates of travel for their information. Form Teachers will mark the absence as 'Absent without Valid Reason'.



# Holistic Assessment (HA)

To support the learning  
and  
development of the child



*Resilience, Innovation, Integrity, Care, Collaboration and Excellence*

# Aim of Primary Education

- ❖ To lay a strong foundation
- ❖ To nurture the whole child

Values  
Life skills  
Social behaviour



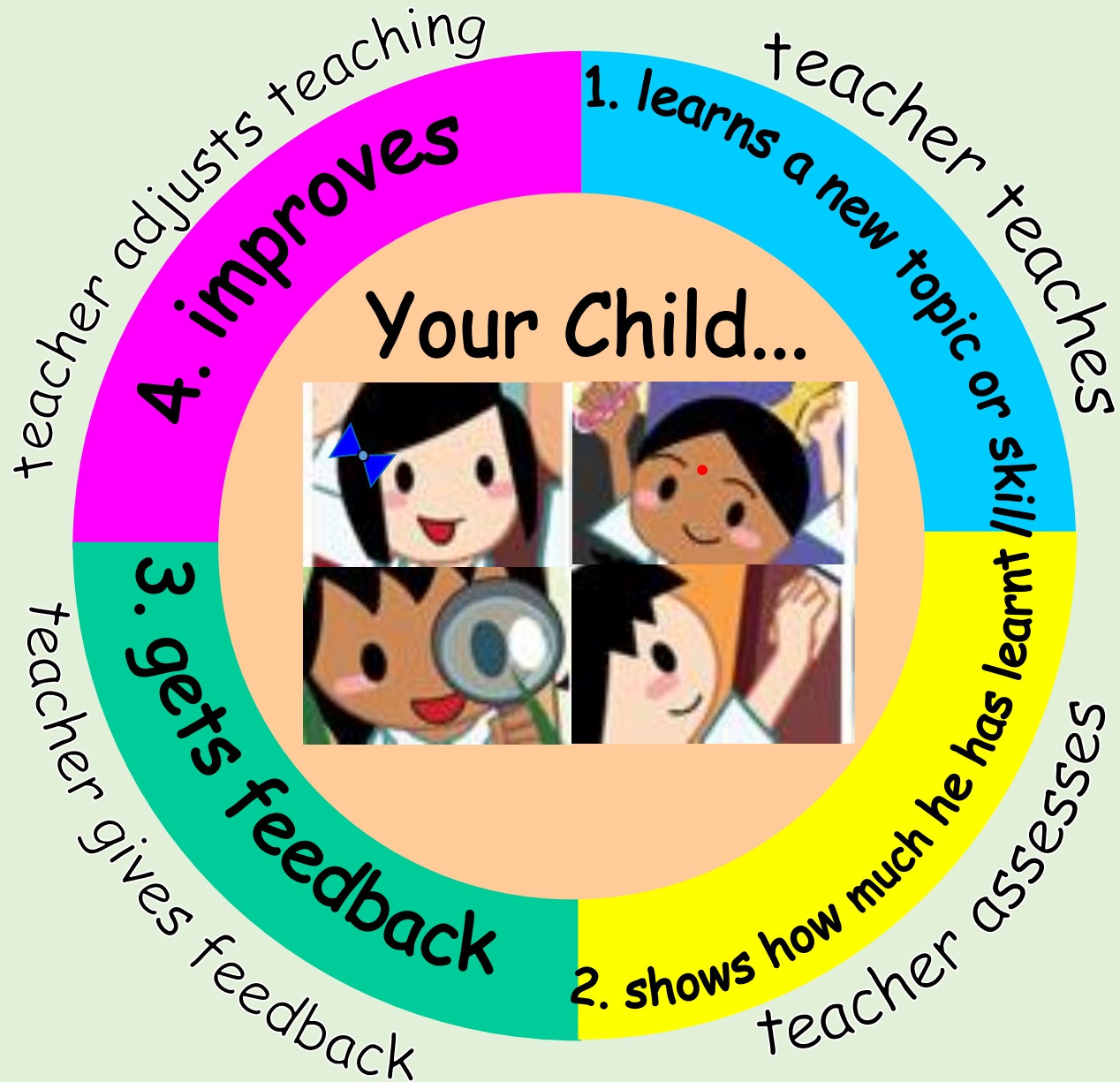
# Develop the WHOLE child

## Every subject is important



*Resilience, Innovation, Integrity, Care, Collaboration and Excellence*

# Assessment is part of learning





# Assessment at Primary 1



Non-weighted

✓ **Different types of assessments**

e.g.

- **Topical Reviews**
- **Short Writing**
- **Reading**
- **Performance Tasks**

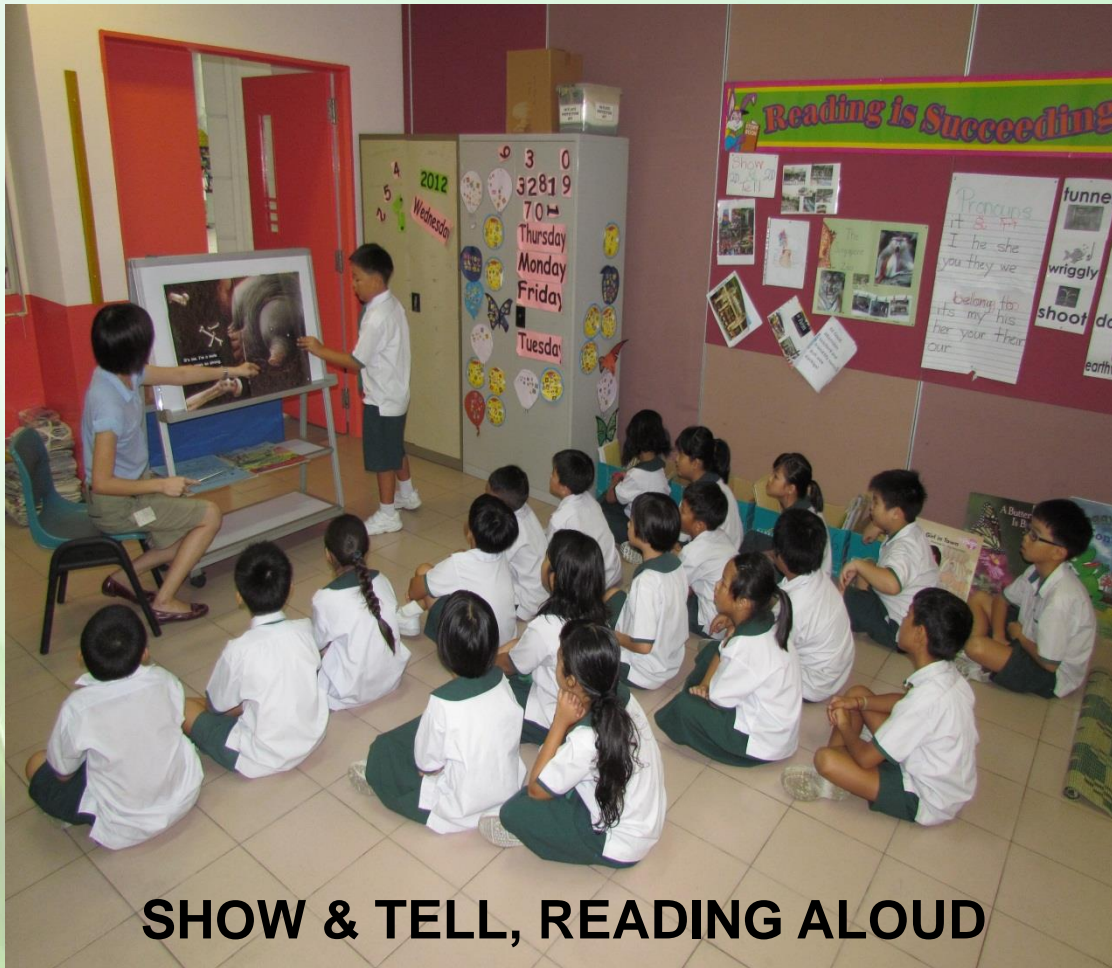
✓ **Shorter assessments**

✓ **More and richer feedback**

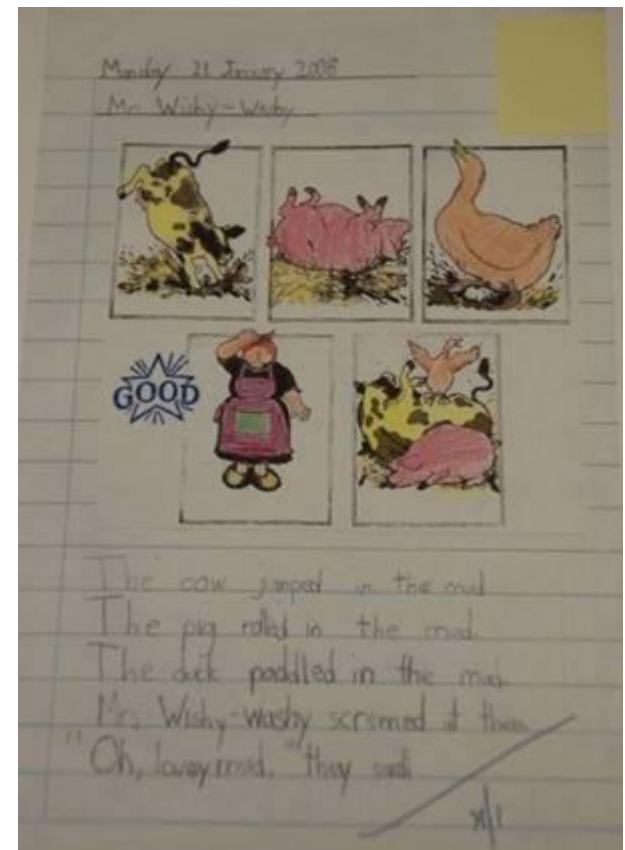
- ~~Mid Year Exam~~
- ~~Year End Exam~~



# How will my child be assessed for Languages?



**SHOW & TELL, READING ALOUD**



**Story Writing**



*Resilience, Innovation, Integrity, Care, Collaboration and Excellence*



**Show and Tell**



**Reading Tasks**



**Simple Writing Tasks**



**Teachers ask questions and give feedback to improve pupils' learning**



*Resilience, Innovation, Integrity, Care, Collaboration and Excellence*

# READING ALOUD RUBRICS

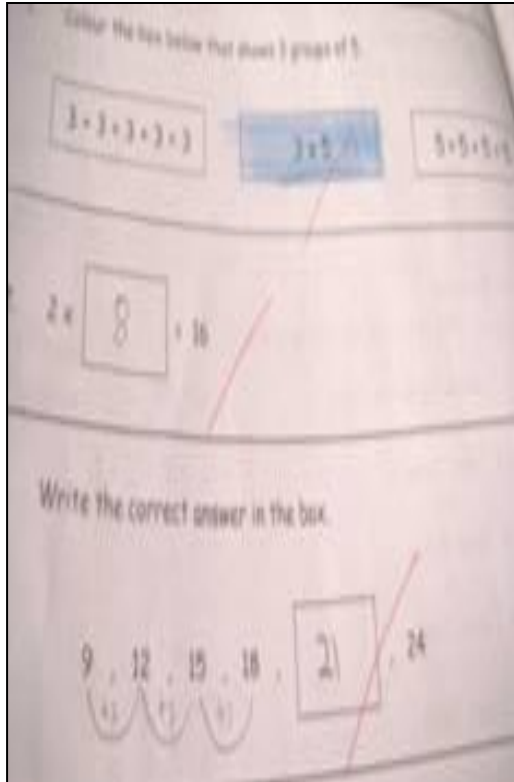
Descriptors	☺	☺☺	☺☺☺	☺☺☺☺
Pronunciation	Pronunciation is unclear, with many errors	Pronunciation is somewhat unclear; with a number of noticeable errors	Generally clear pronunciation, with a number of noticeable errors	Clear and consistently good pronunciation
Fluency	Very slow and jerky reading of words, with many words skipped or unread	Slow and hesitant reading with many words skipped or unread	Reading is somewhat fluent with some words skipped or unread	Consistently fluent reading without hesitation



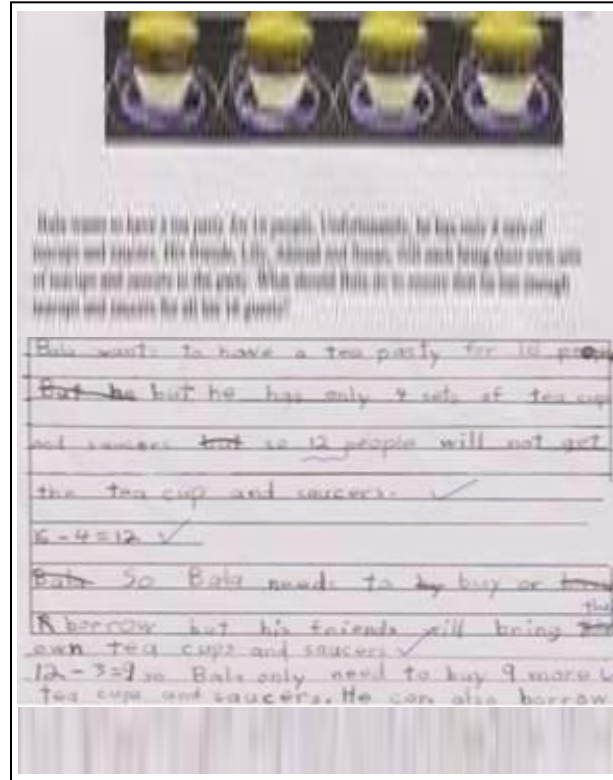
# Self & Peer Assessment

	Please tick(✓)		
	Yes	Sometimes	No
I looked at my friends while presenting.			
I spoke clearly.			
My friends could hear me.			
I spoke in complete sentences.			
	Please tick(✓)		
	Yes	Sometimes	No
My friend looked at us while presenting.			
My friend spoke clearly.			
My friend was well-prepared.			
My friend knows the topic well.			





**Bite-Sized Review**



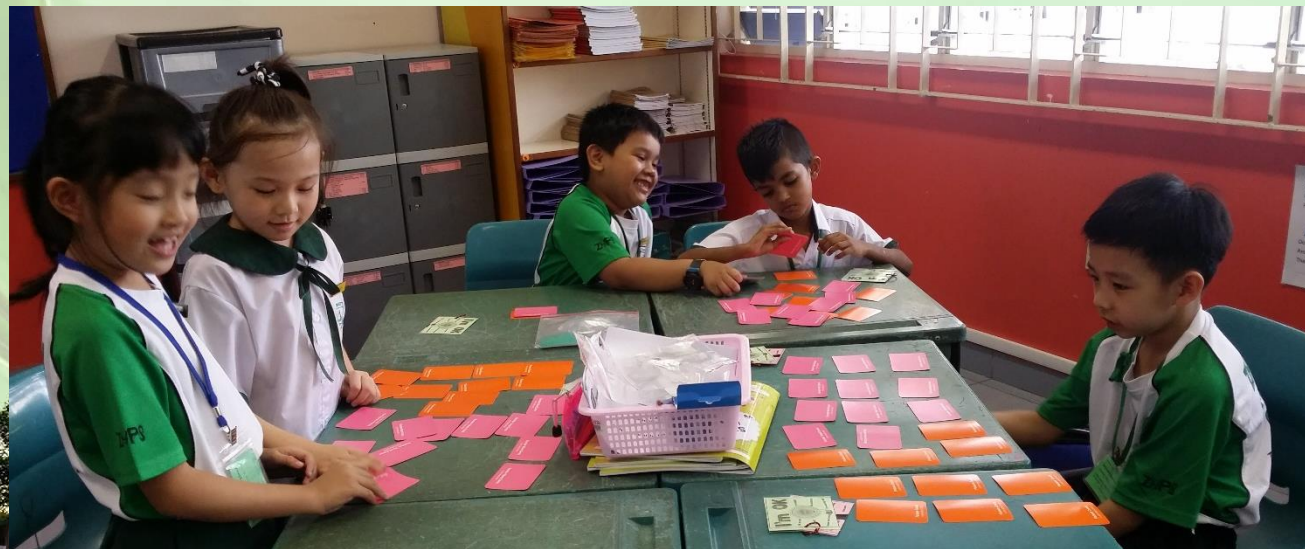
**Journal Writing**



**Performance Tasks**



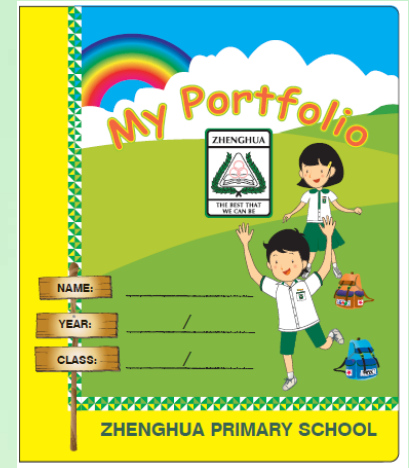
# A range of appropriate assessment tasks and practices are used to assess other subjects



# How will you receive feedback on your child's progress?

## 1) Holistic Assessment Portfolio

- Termly progress reports will be shown with the portfolio
- Portfolio contains a good sample of your child's work and performance tasks in all subjects
  - with rubrics
  - with teacher's qualitative comments





# How will you receive feedback on your child's progress?

## 2) Mid-year and End-of-year report cards

- Qualitative descriptors (Learning Outcomes) to show your child's learning progress
- Overall qualitative comments on your child's learning



# Partnership with Parents

## Term 2: Parent-Child-Teacher Conference



*Resilience, Innovation, Integrity, Care, Collaboration and Excellence*

# Additional Information

- At the end of the year, P1 students will stay with their classmates and move together to the same P2 classes.



# Programme for Active Learning



PAL



*Resilience, Innovation, Integrity, Care, Collaboration and Excellence*

# The 2 Broad Areas in PAL

1. Sports & Outdoor Education
2. Performing & Visual Arts



*Resilience, Innovation, Integrity, Care, Collaboration and Excellence*



# Objectives of PAL

- Provide P1 and P2 students with broad exposure and experiences through fun & varied activities
- Facilitate holistic development in the 5 domains (cognitive, moral, social, aesthetics, physical)
- Provide varied avenues to develop *social emotional competencies*



*Resilience, Innovation, Integrity, Care, Collaboration and Excellence*

# Characteristics of PAL –

- Learning in a Creative Way
- Opportunities for Children to Create



*Resilience, Innovation, Integrity, Care, Collaboration and Excellence*

# Characteristics of PAL :

- Experiential in Nature
- Fun & Enjoyable



*Resilience, Innovation, Integrity, Care, Collaboration and Excellence*





Characteristics of PAL –

■ Incorporates Values Education & SEL

*Resilience, Innovation, Integrity, Care, Collaboration and Excellence*

# PAL in ZHPS

- P1 - 3 modules
- Each module spans 7 weeks
- 2 hrs of PAL a week

## P1 Module

1. Outdoor Education
2. Visual Art
3. Sports and Games

The End



*Resilience, Innovation, Integrity, Care, Collaboration and Leadership*